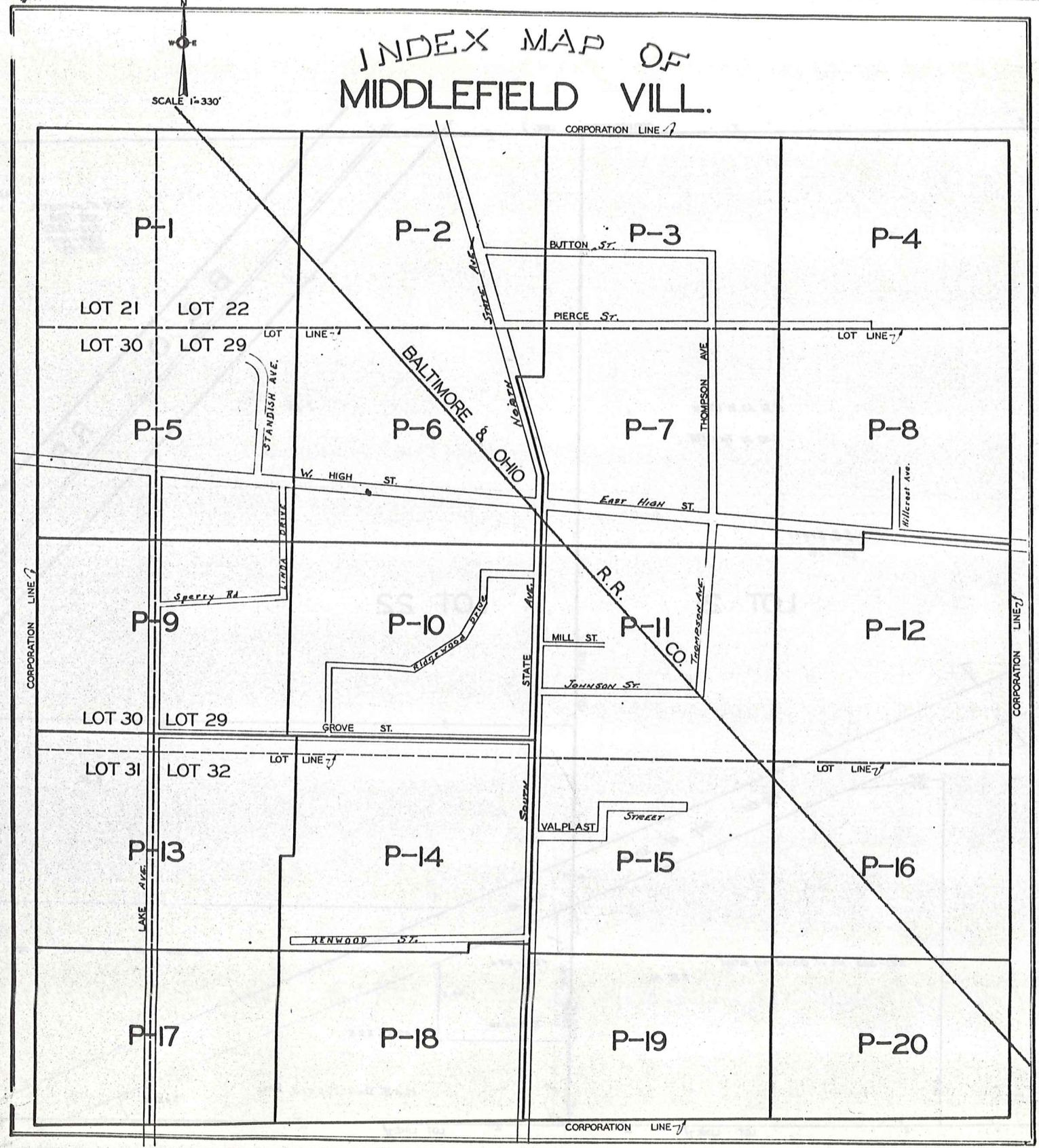
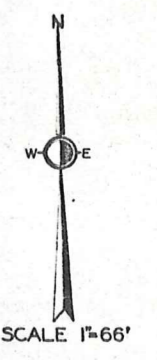
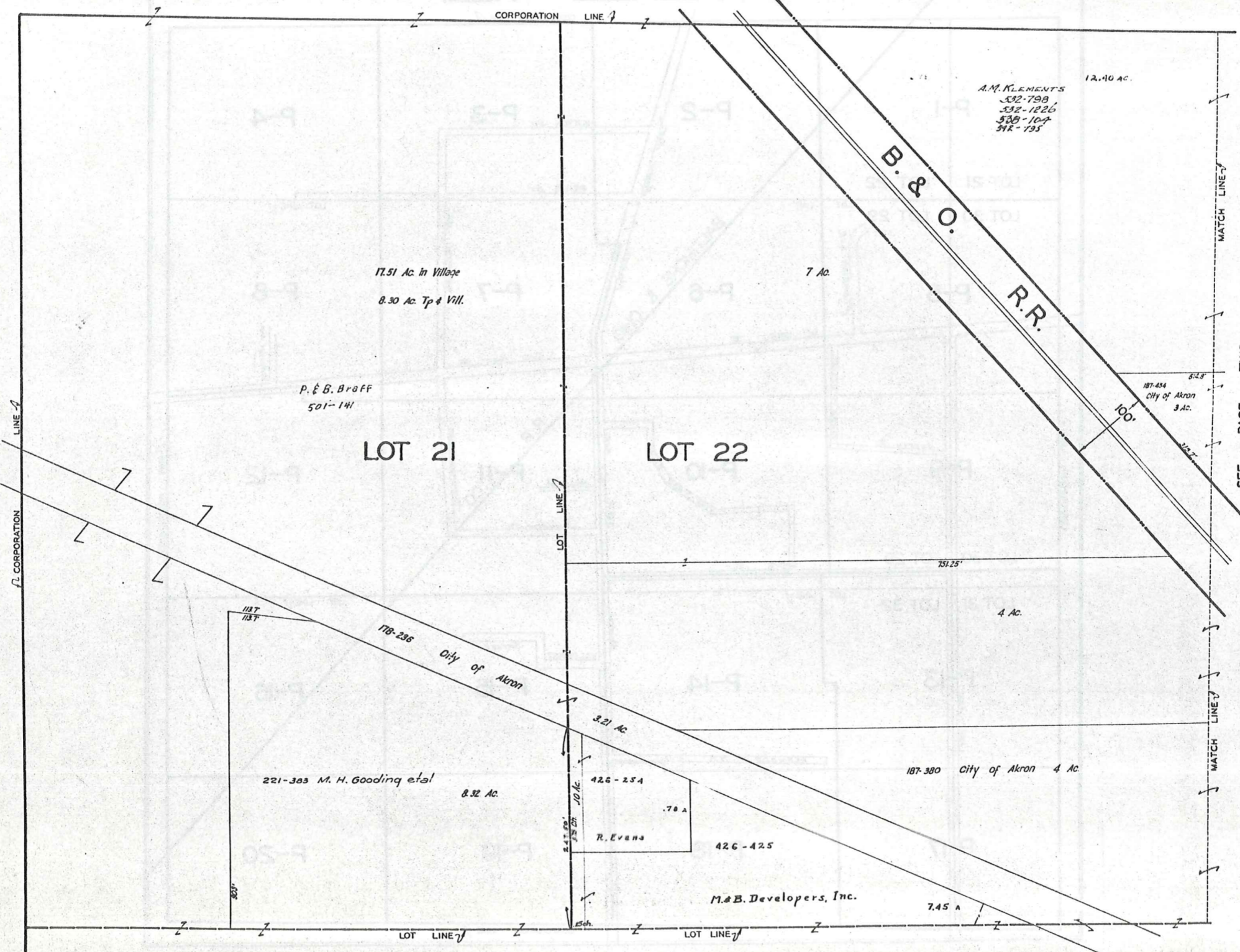


INDEX MAP OF MIDDLEFIELD VILL.

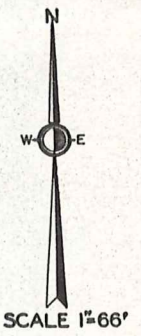
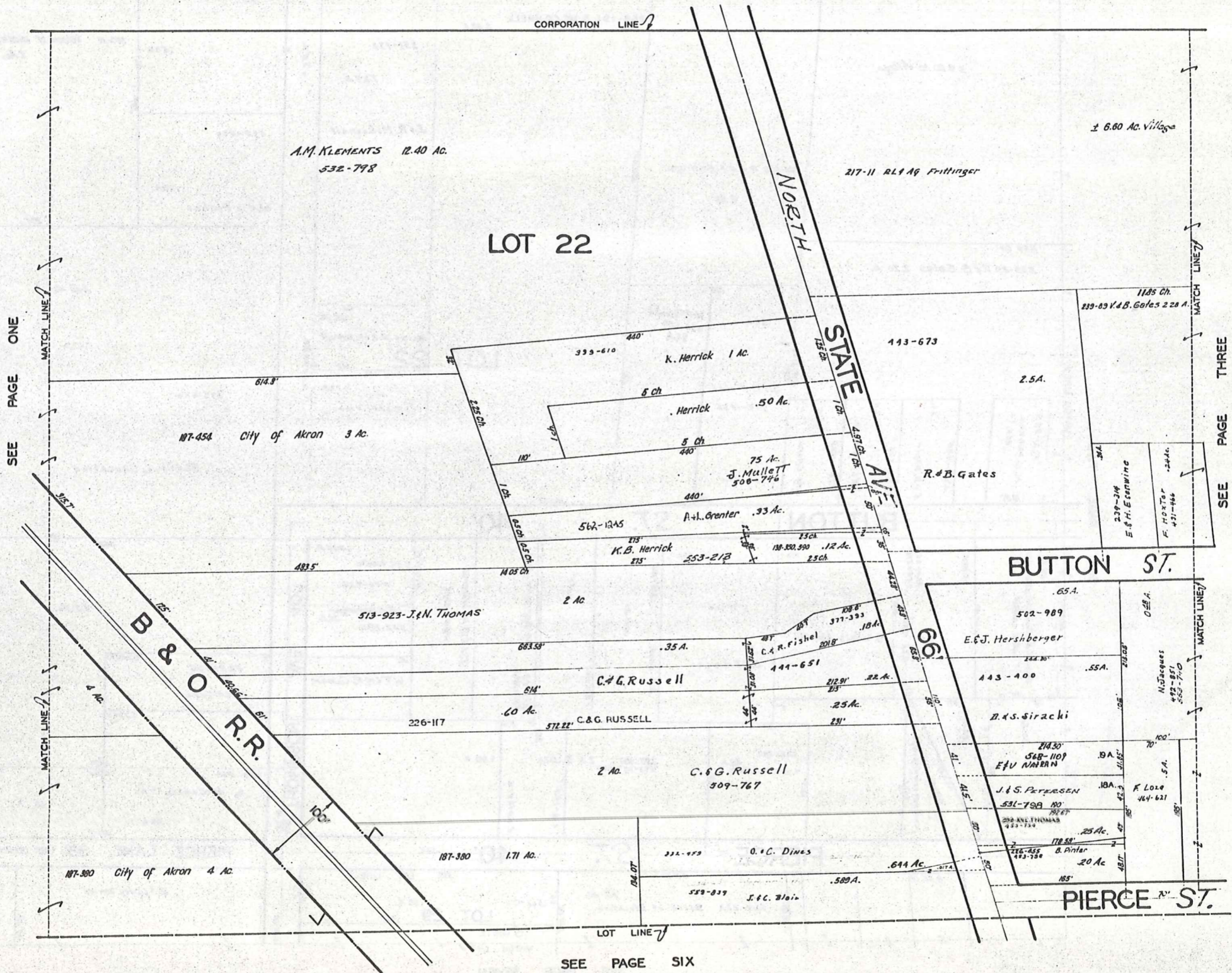
SCALE 1"=330'



MIDDLEFIELD VILLAGE



JAN. 1, 1975

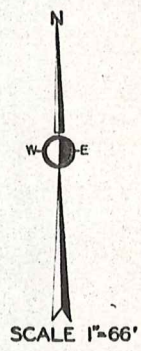
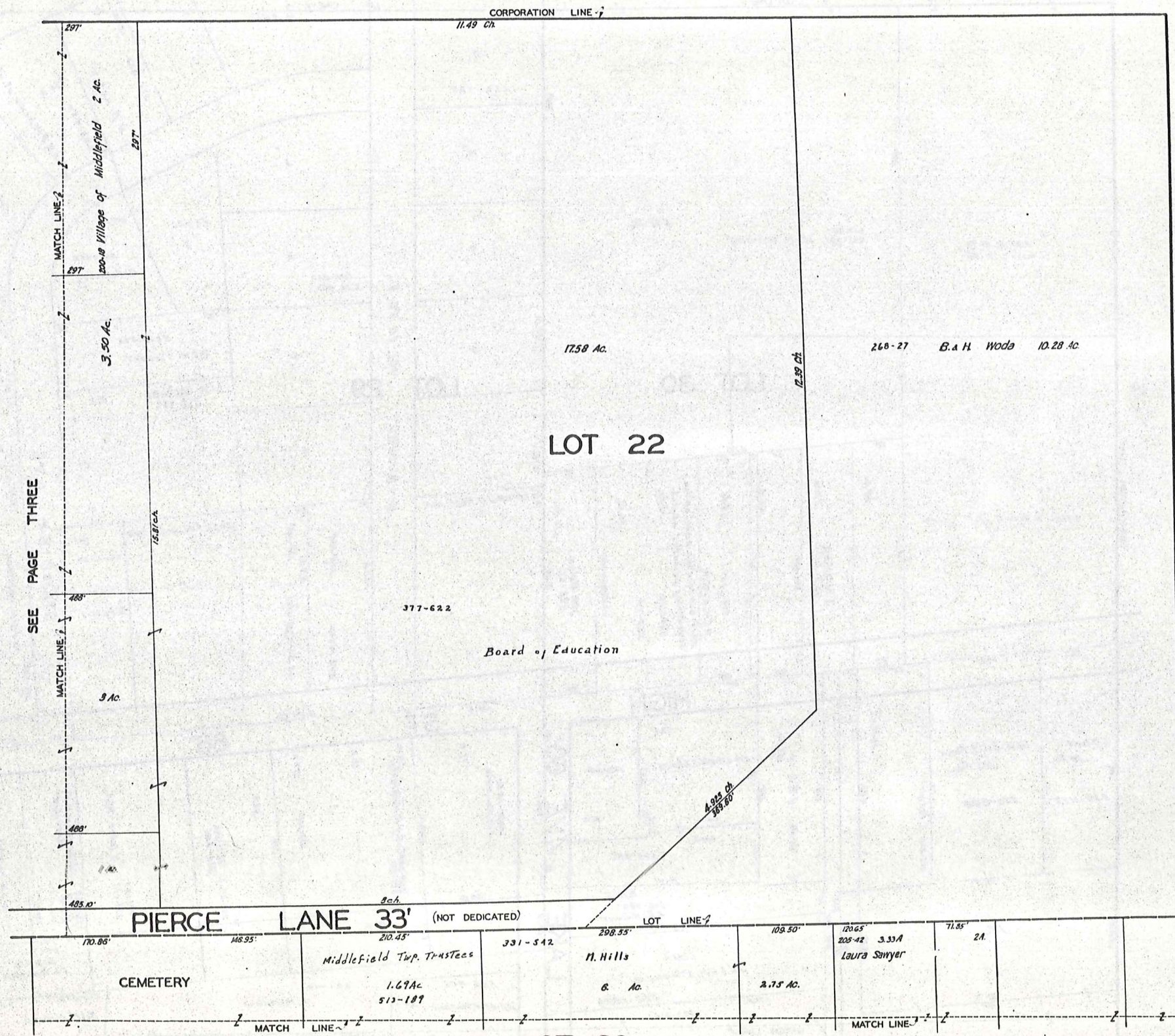


SCALE 1"=66'

JAN 1, 1975

MIDDLEFIELD VILLAGE

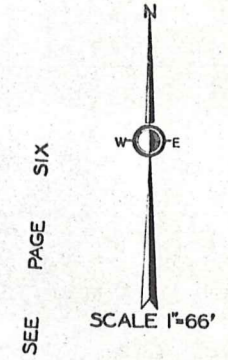
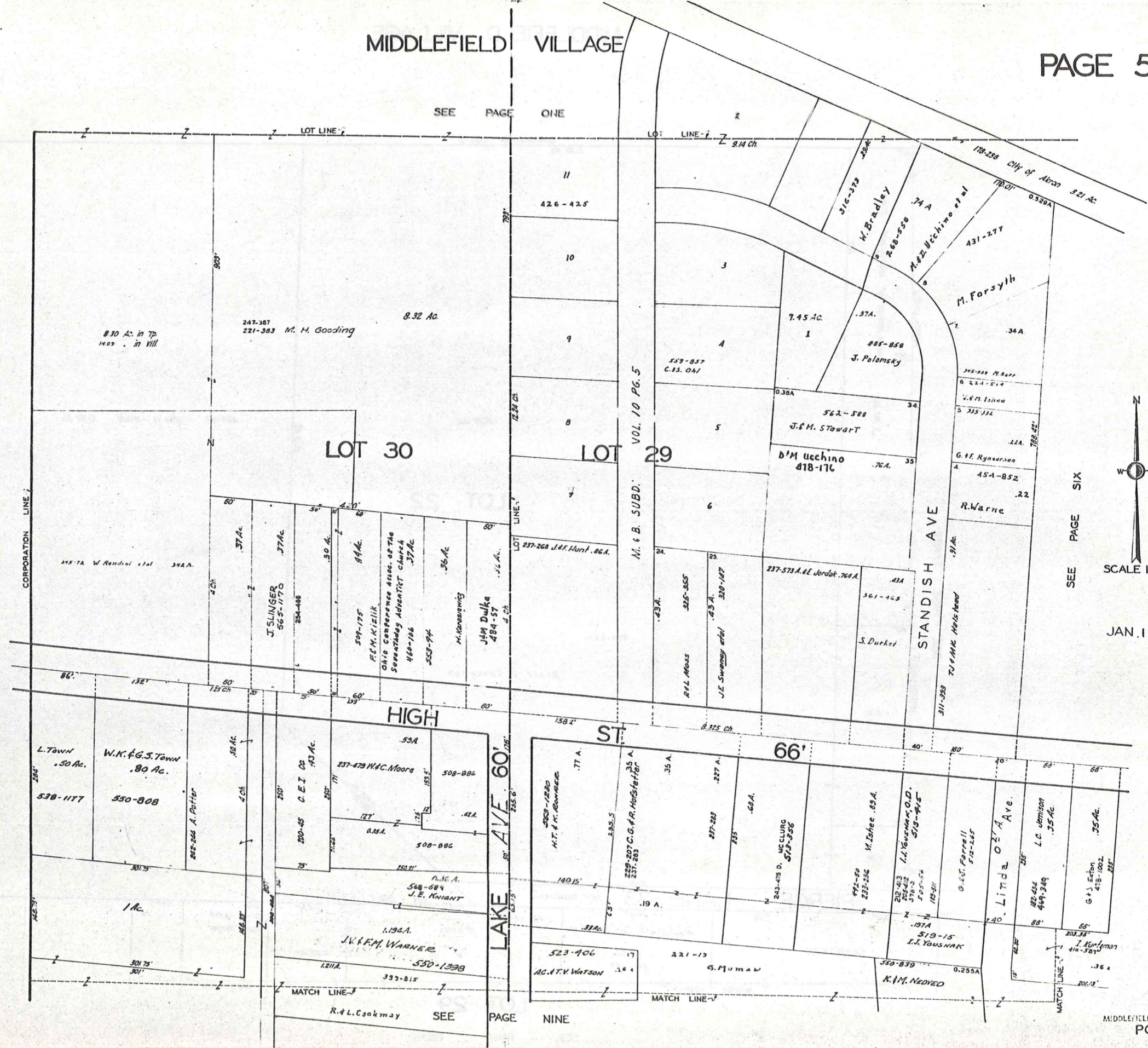
PAGE 3



JAN .1 , 1975

SEE PAGE EIGHT

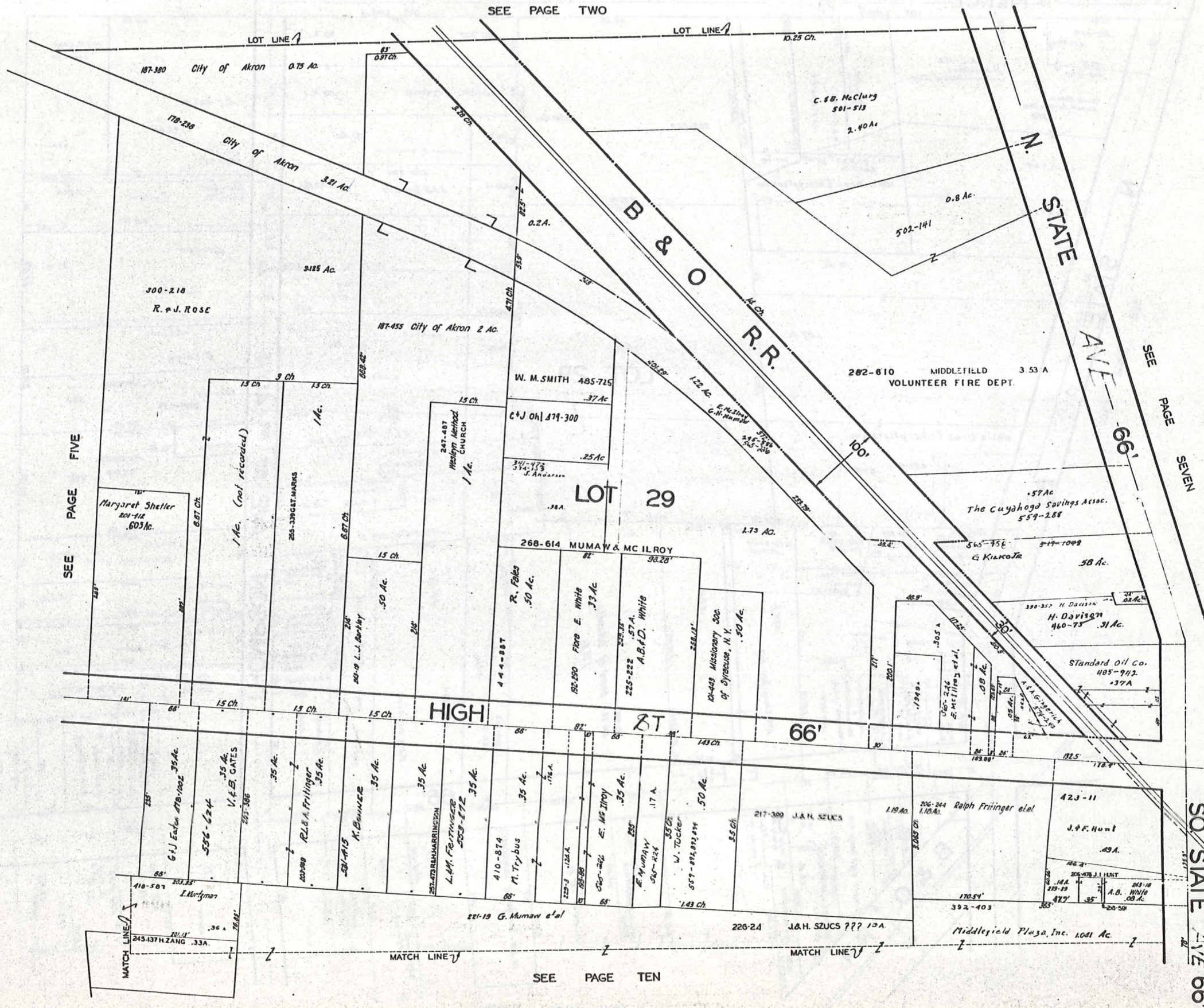
MIDDLEFIELD VILLAGE



SEE PAGE SIX

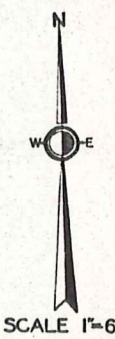
JAN. 1, 1975

SEE PAGE TWO



SEE PAGE FIVE

SEE PAGE SEVEN

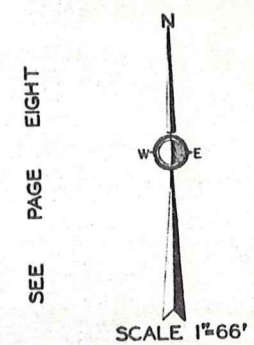
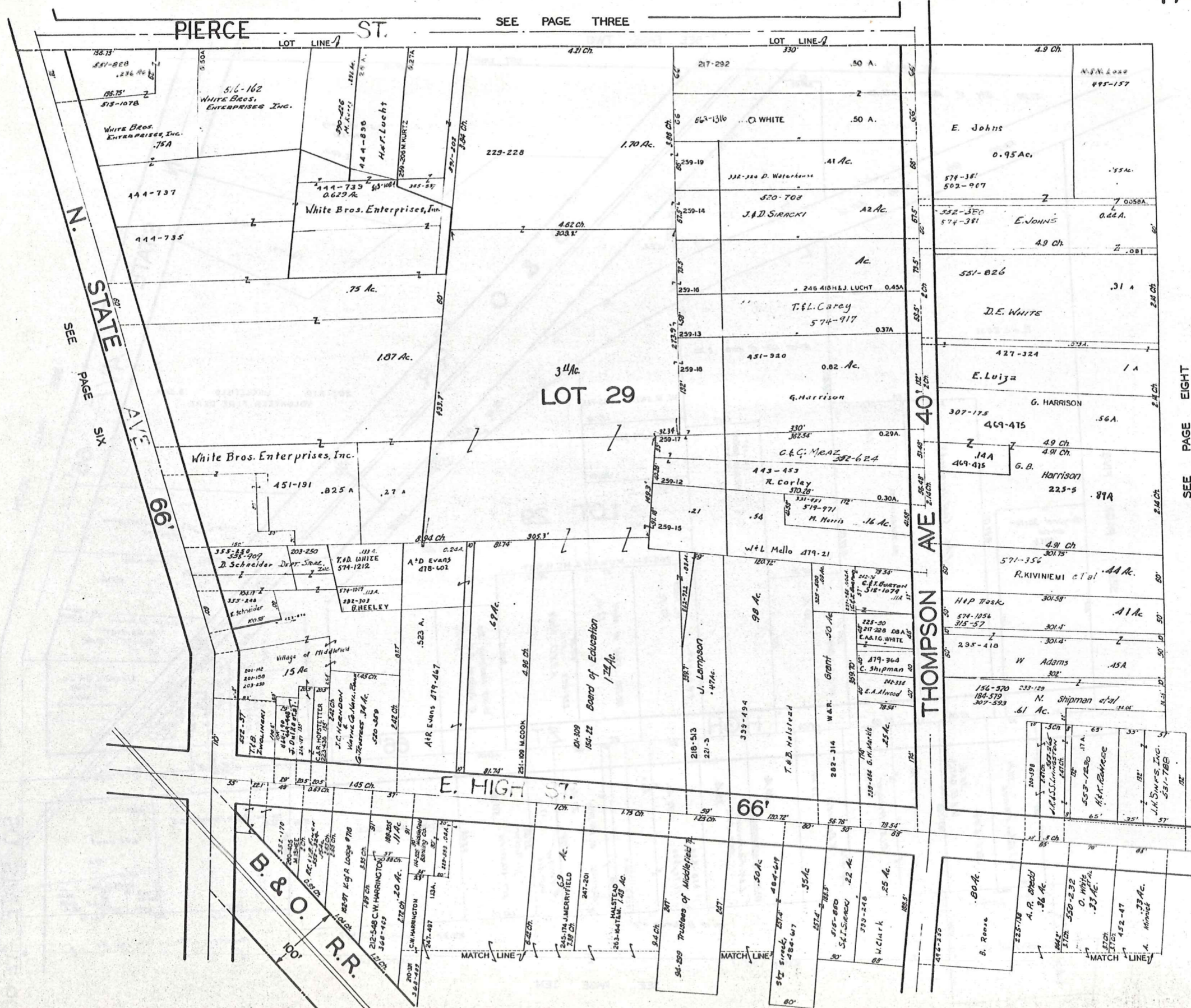


SCALE 1"=66'

JAN. 1, 1975

SEE PAGE TEN

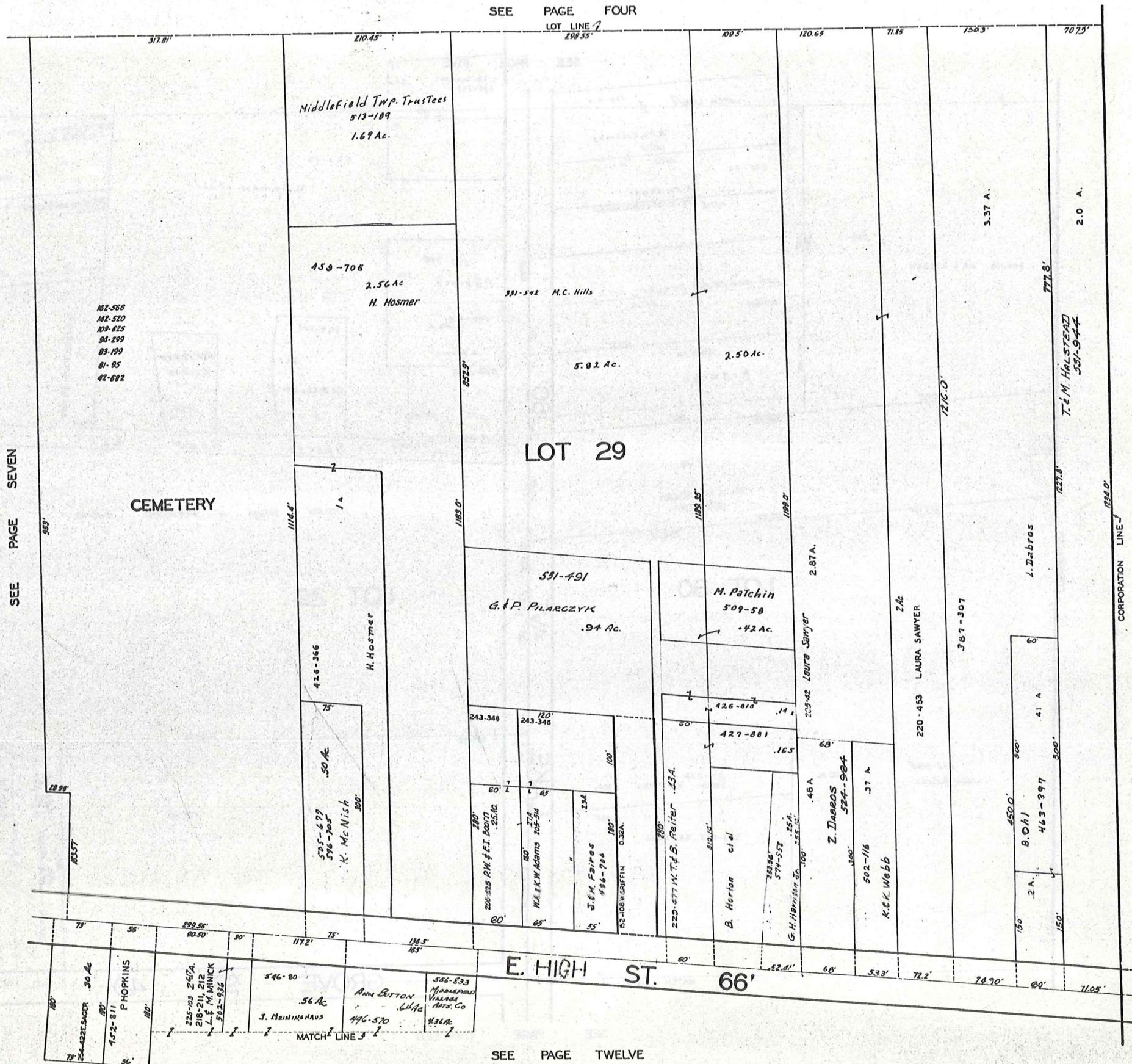
STATE AVE 66'



JAN 1, 1975

SEE PAGE FOUR

LOT LINE 1



SEE PAGE SEVEN

182-566
 142-520
 129-625
 94-299
 83-199
 81-95
 42-682

CEMETERY

LOT 29

E. HIGH ST. 66'

SEE PAGE TWELVE

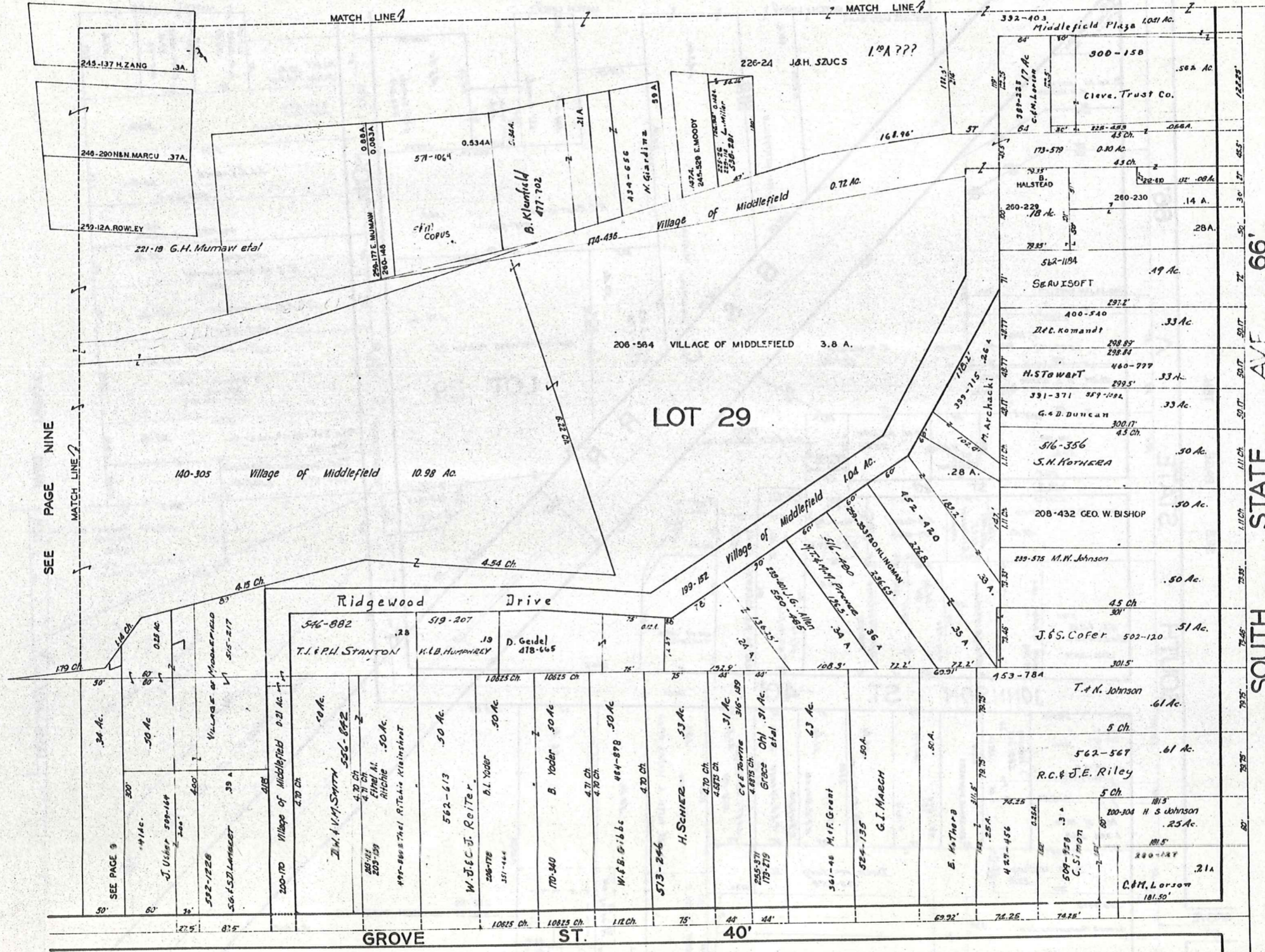


SCALE 1"=66'

JAN 1, 1975

MIDDLEFIELD VILLAGE

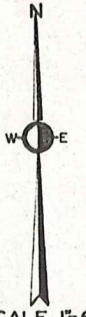
SEE PAGE SIX



SEE PAGE NINE

SOUTH STATE AVE 66'

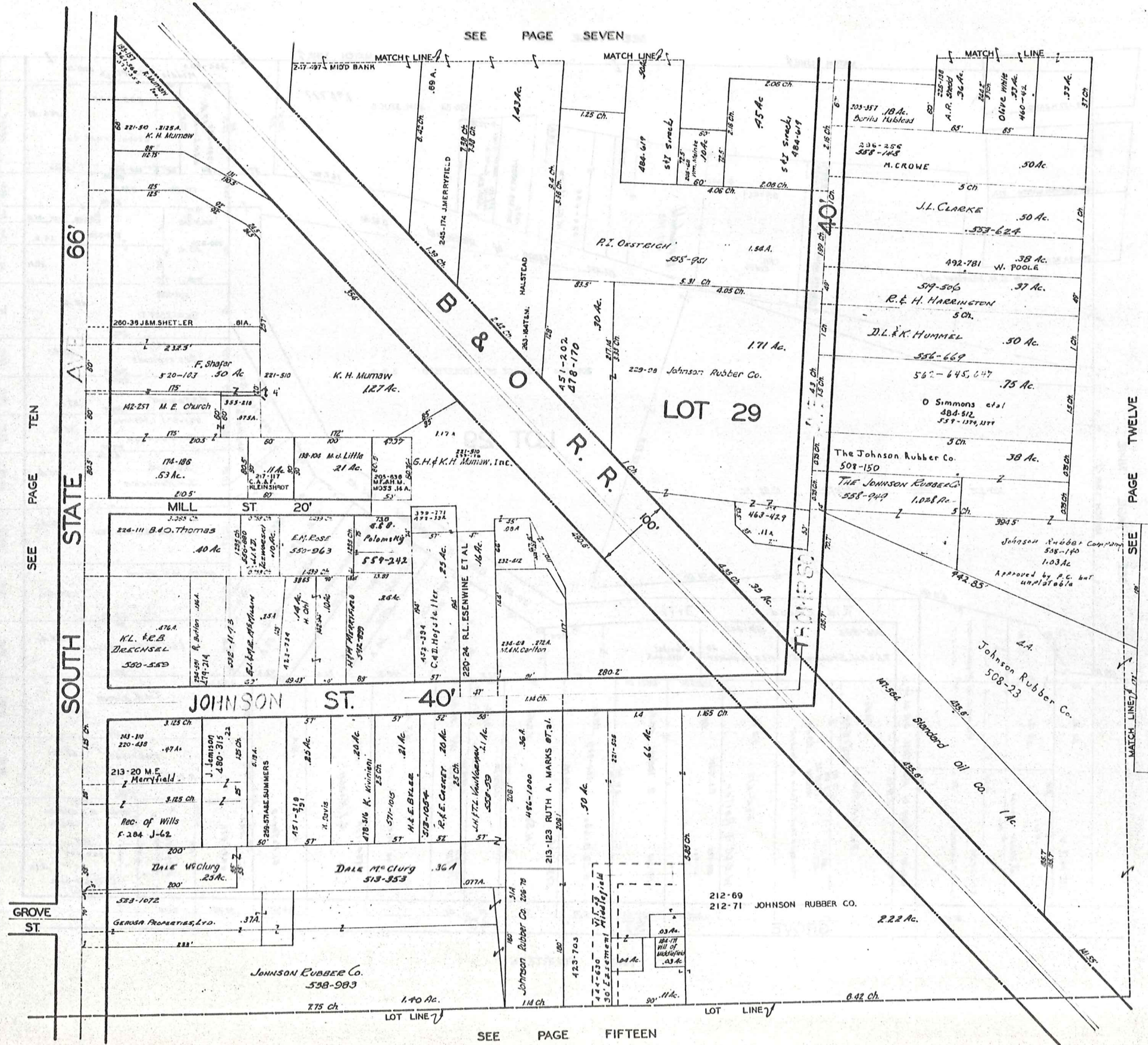
SEE PAGE ELEVEN



SCALE 1"=66'

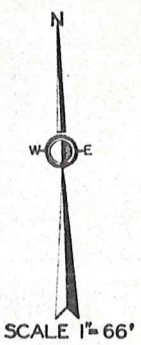
JAN. 1, 1975

SEE PAGE FOURTEEN



SEE PAGE TEN

SEE PAGE TWELVE

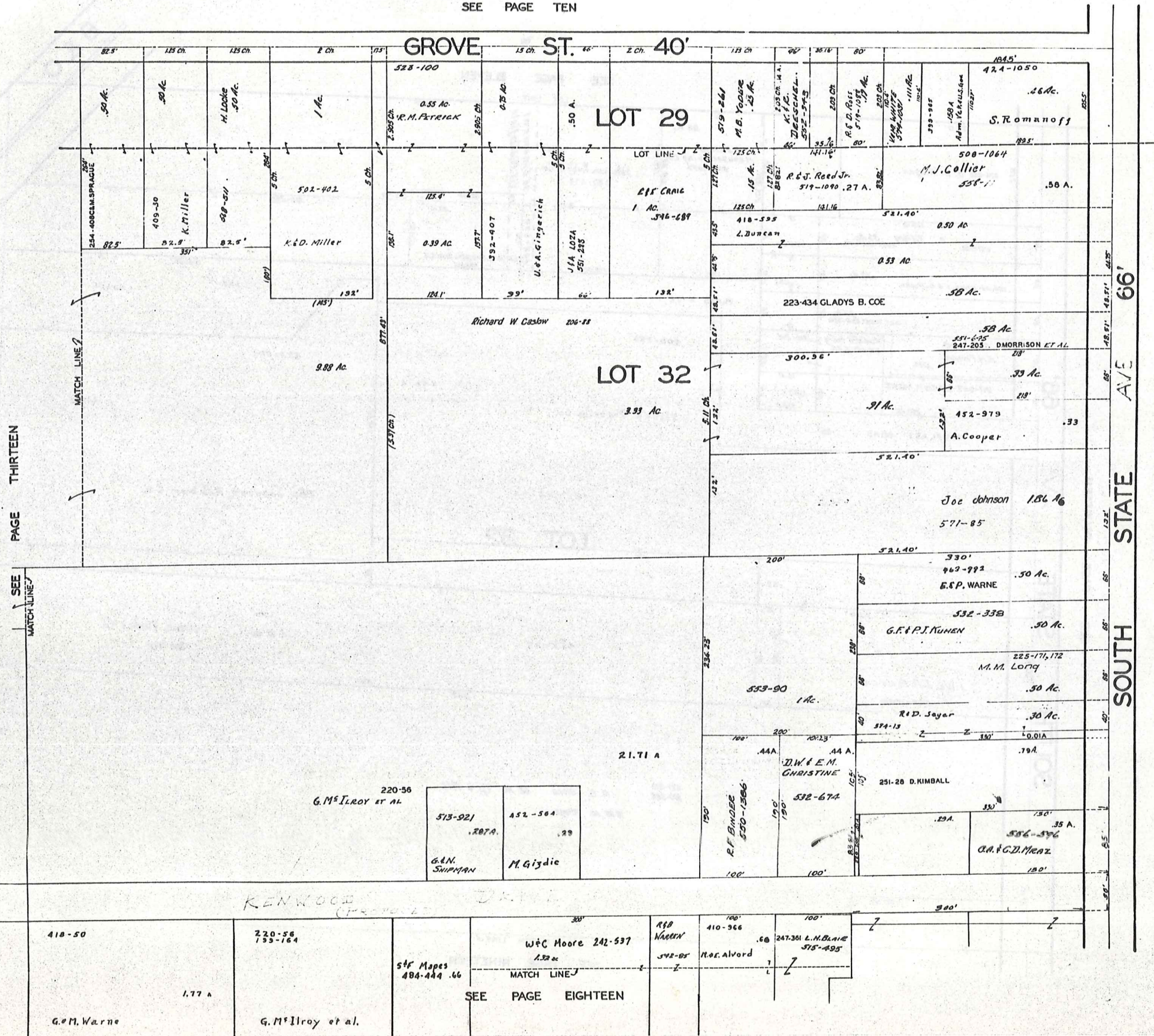


JAN. 1, 1975

SEE PAGE FIFTEEN

MIDDLEFIELD VILLAGE

SEE PAGE TEN



PAGE THIRTEEN

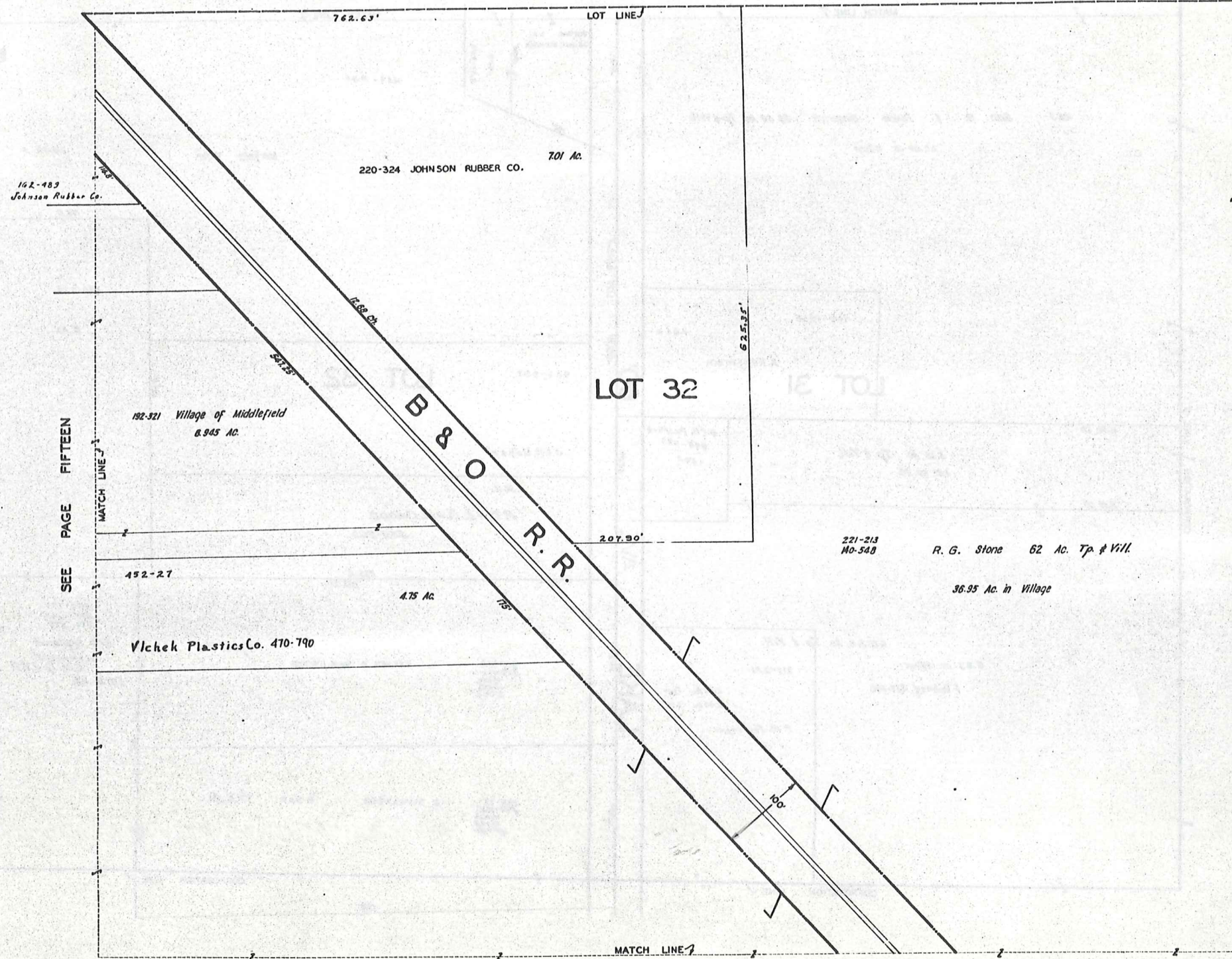
SEE MATCH LINE

SEE PAGE FIFTEEN



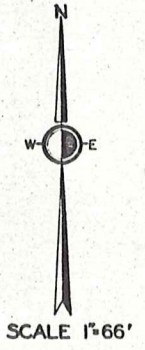
JAN 1, 1975

SEE PAGE TWELVE



SEE PAGE FIFTEEN

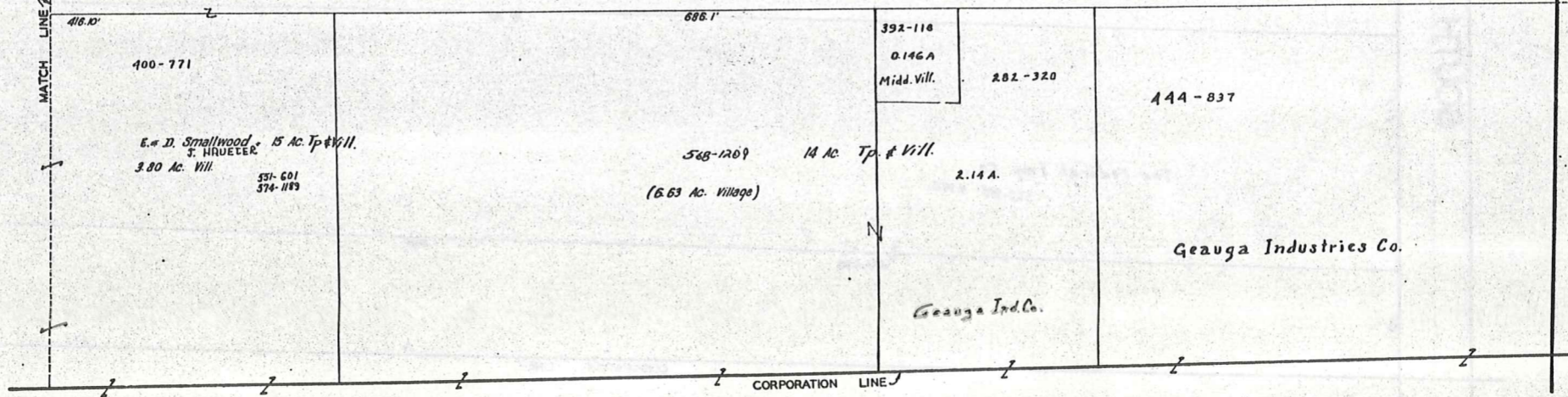
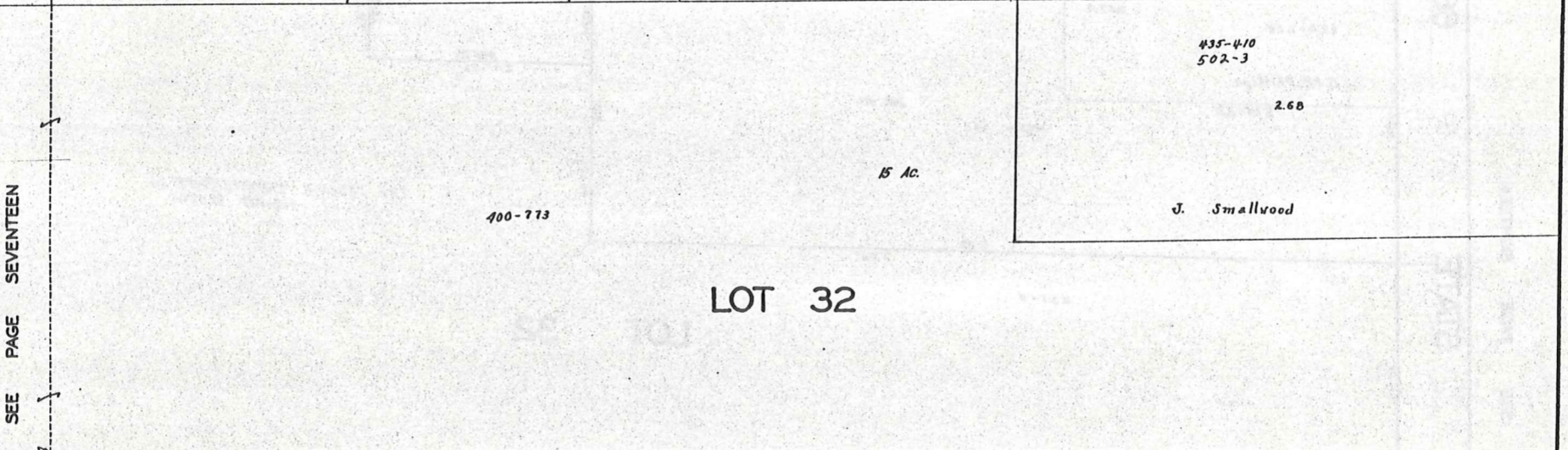
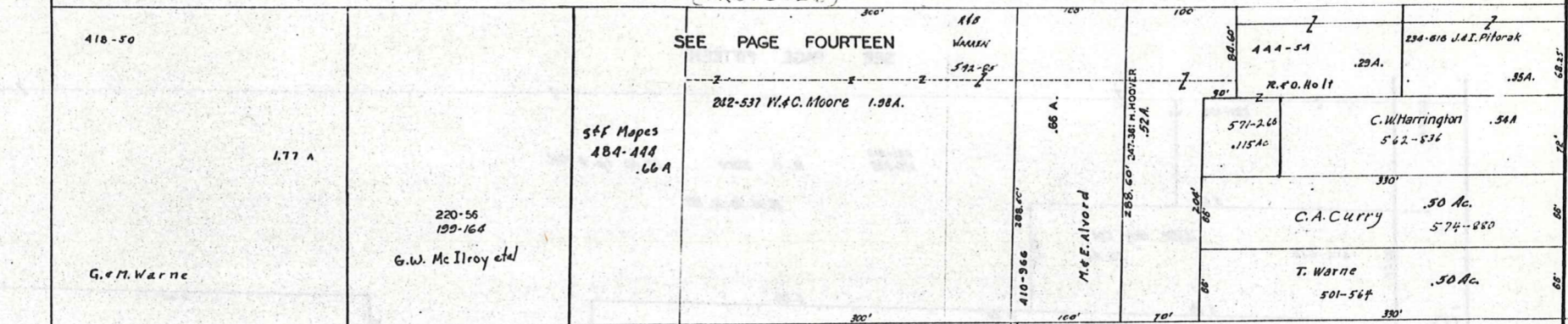
SEE PAGE TWENTY



JAN 1, 1975

MIDDLEFIELD VILLAGE

KENWOOD (PROPOSED) DRIVE 50'



SEE PAGE SEVENTEEN

MATCH LINE

SOUTH STATE AVE 66'

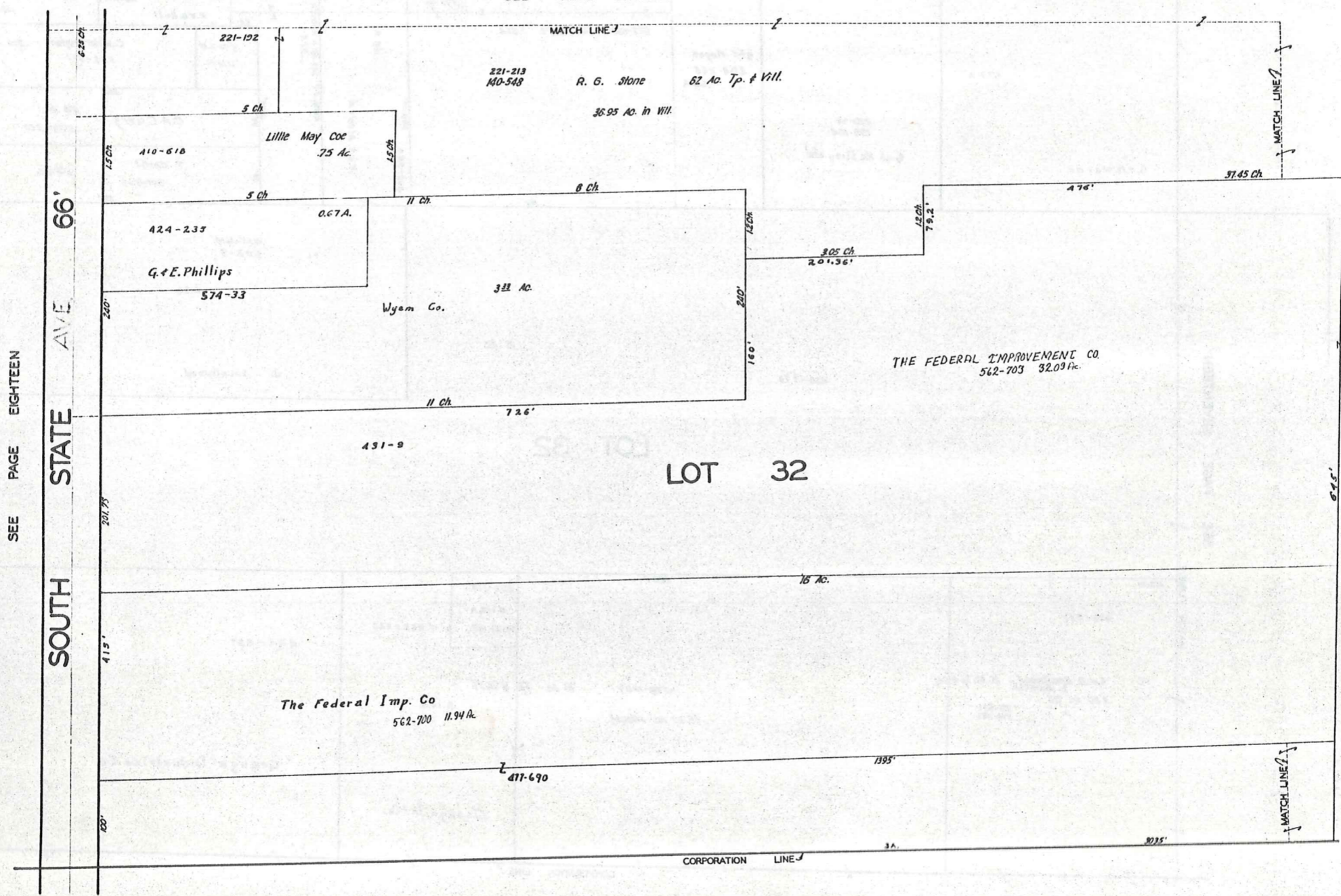
SEE PAGE NINETEEN



SCALE 1"=66'

JAN. 1, 1975

SEE PAGE FIFTEEN



SCALE 1"=66'

JAN . 1 , 1975

SEE PAGE EIGHTEEN

SEE PAGE TWENTY

SEE PAGE SIXTEEN

MATCH LINE

221-219
MO-548
R. G. Stone
36.95 Ac. in Village.
62 Ac. Tp. & Vill.

37.45 Ch. 930.5'

B & O R.R.

159-456 E. T. Steele Jr. et al
51.50 Ac. Tp. & Vill.
0.45 Ac. in Vill.

LOT 32

1.65 Ac. in Tp.

Federal Improvement Company

486-112 20.906 Ac.

SEE PAGE NINETEEN

MATCH LINE

18 Ac.

643.5'

MATCH LINE

3035'

CORPORATION LINE

CORPORATION LINE



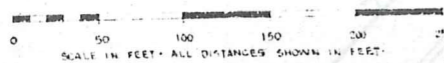
SCALE 1"=66'

JAN .1, 1975

PLAT OF
M. & B. SUBDIVISION
IN
LOT NO. 22 & LOT NO. 29
MIDDLEFIELD VILLAGE
GEAUGA COUNTY OHIO

SCALE: 1 IN. = 50 FT.

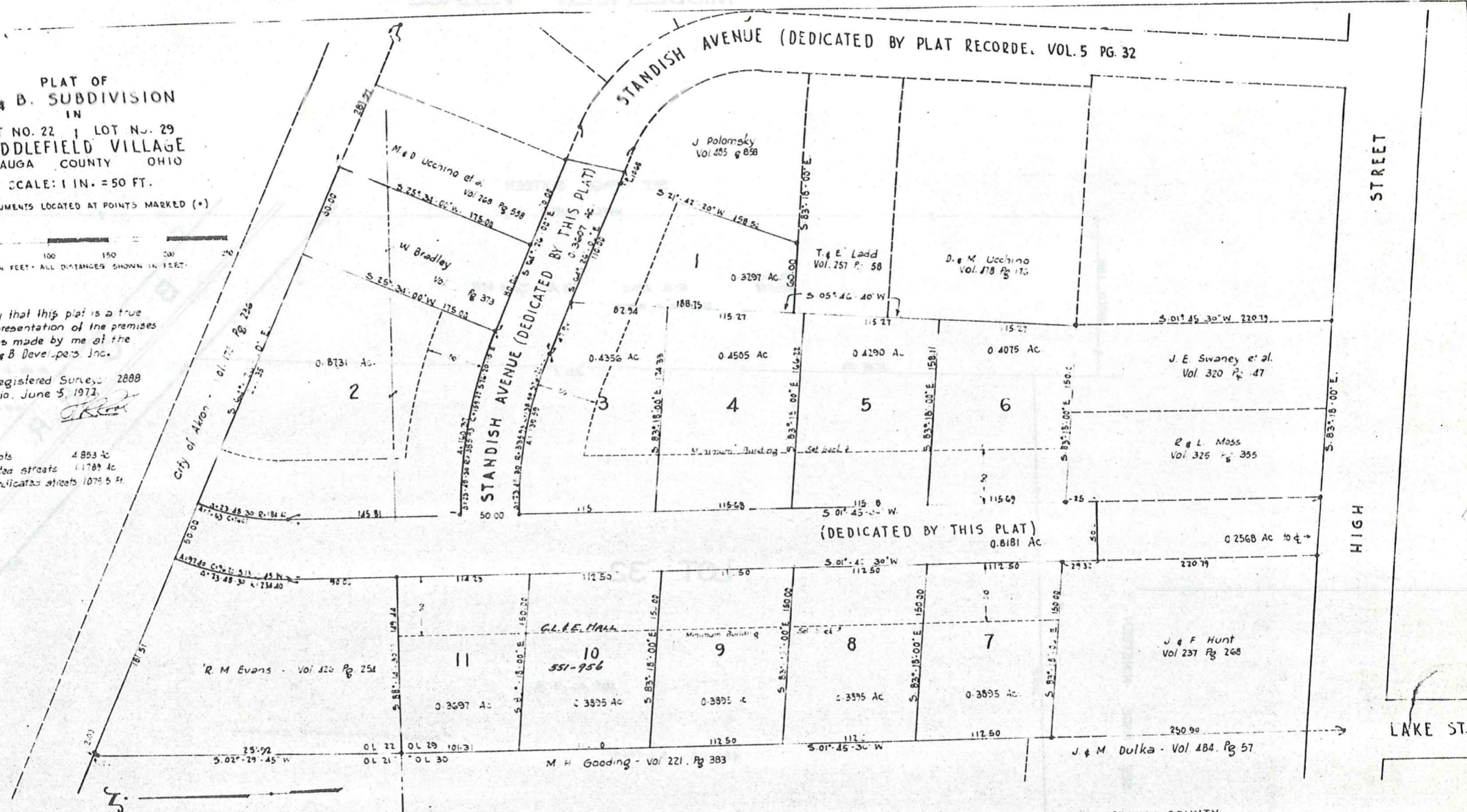
IRON MONUMENTS LOCATED AT POINTS MARKED (*)



I hereby certify that this plat is a true and correct representation of the premises shown and was made by me at the instance of M. & B. Developers, Inc.

T. R. Root Registered Surveyor 2888
CHARDON OHIO, June 5, 1973

Total area of sub-lots 4.853 Ac
Total area of dedicated streets 1.1789 Ac
Total length of dedicated streets 1076.5 Ft.



M. & B. DEVELOPERS, INC., an Ohio corporation, owner of all the land shown hereon, claiming title by or through instrument recorded in volume 126, page 125 of Geauga County records of deeds, hereby accepts and adopts this plat and certifies that the same was prepared at its order and request. Said Corporation hereby dedicates to public use for highway purposes the area within the boundaries of Standish Avenue as the same are shown, and certifies that said area is free of all encumbrances. Said Corporation now requests acceptance of this Dedication and Subdivision by Middlefield Village, and that this Plat then be placed upon the records of Geauga County.

In witness whereof said Corporation sets its hand and Corporate seal at Ohio this _____ day of January, 1973

M. & B. DEVELOPERS, INC.
Witness _____ by _____ its
Witness _____ by _____ its

State of Ohio ss Before me a Notary Public and for as a County and State, personally appeared the above named M. & B. Developers, Inc. by _____ its _____ and _____ its _____ who acknowledged that they did sign the foregoing instrument, and that the same is the free act and deed of said Corporation and the free act and deed of each of them personally and as such officers. In testimony whereof I have hereunto set my hand and official seal at _____ Ohio this _____ day of January, 1973

Notary Public

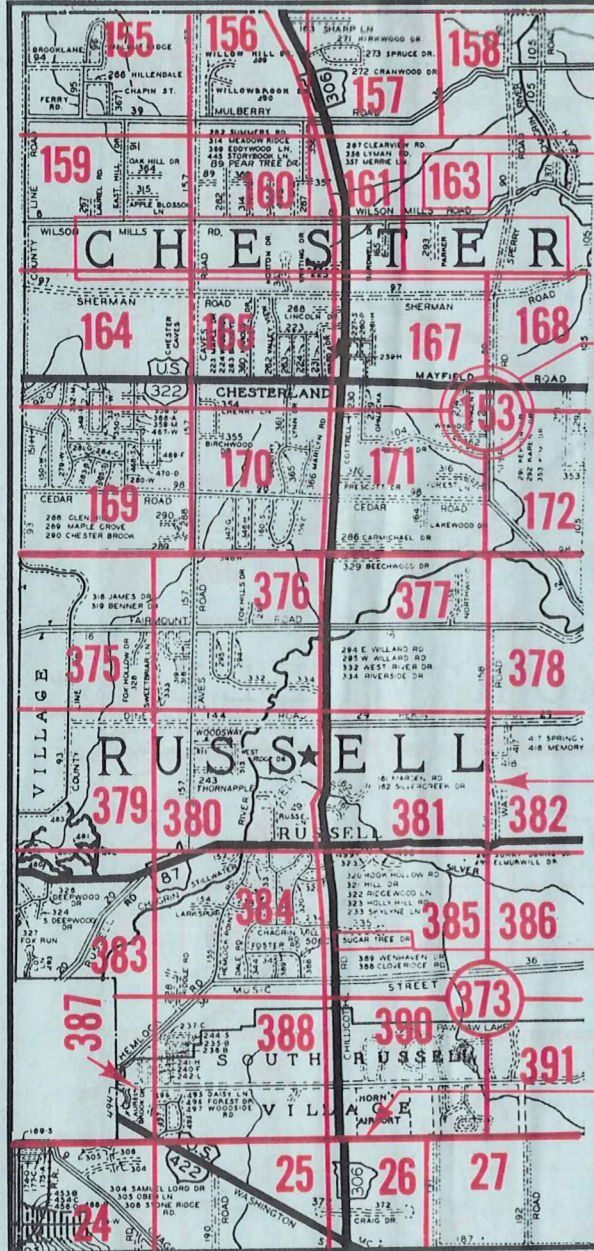
FOR MIDDLEFIELD VILLAGE
Acceptance recommended _____
Date _____ for _____
Acceptance recommended Lawrence A. Jack, P.E.
Date Jan. 24, 1973 for Village Engineer
Acceptance recommended _____
Date _____ for _____
The subdivision of land as shown on this Plat is accepted on behalf of Middlefield Village, and the land dedicated to public use is hereby accepted as such for said Village.
Mayor _____
Council President _____
Clerk _____

Attest: _____
by Ord. #481 adopted _____ 1972

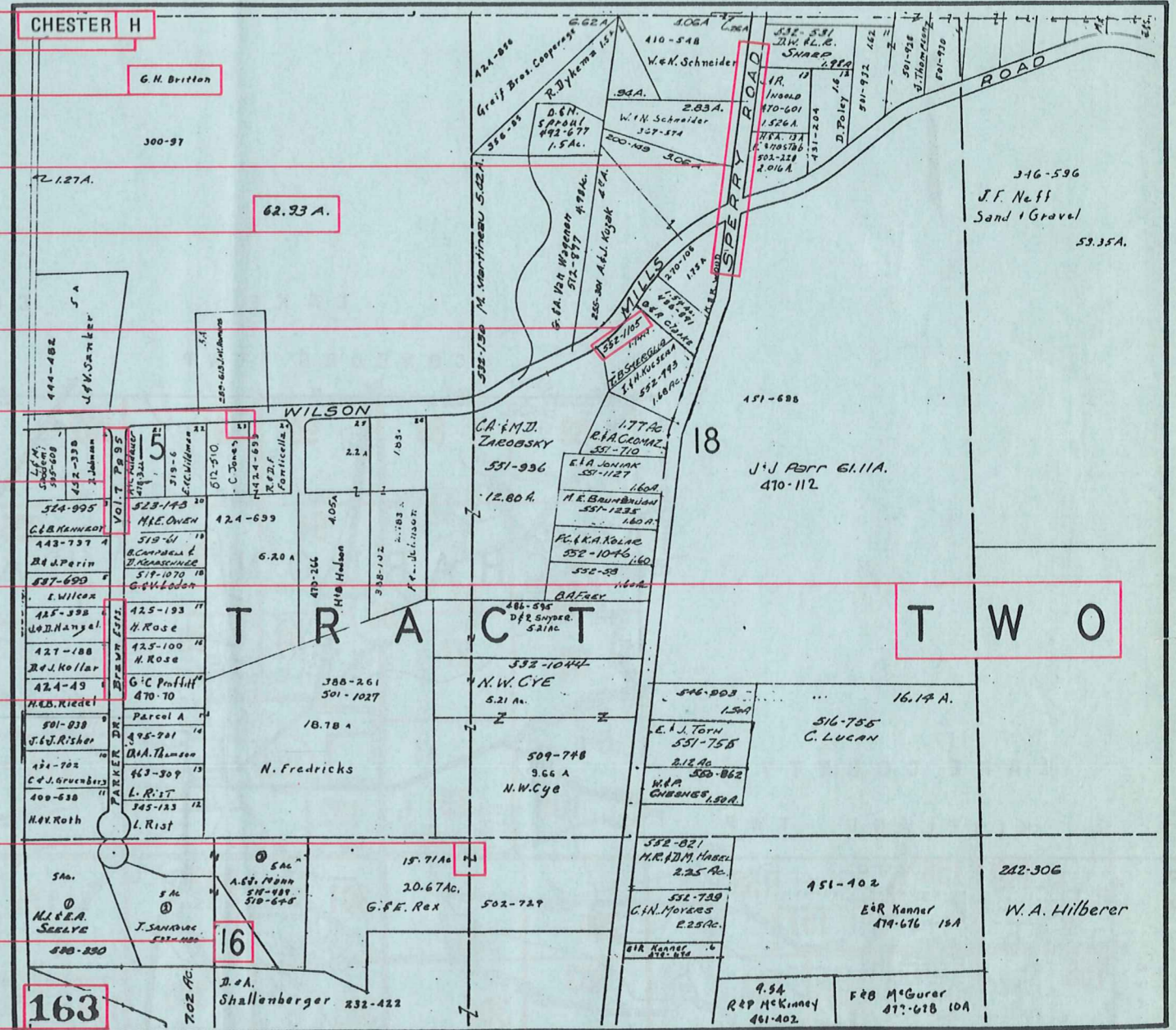
FOR GEAUGA COUNTY
Entered for transfer _____ 1973
Transferred _____ 1973
Auditor of Geauga County _____
Filed for Record _____ 1973
Recorded _____ 1973 Vol. _____ Page _____
Gauga County Plat Records
Recorder of Geauga County _____

Explanation and Use Sheet for Geauga County, Ohio

SAMPLE (PARTIAL) COUNTY INDEX MAP



SAMPLE (PARTIAL) MAP PAGE



- Township Name
- Map Page Number (Or Letter)
- Owners Name
- Street Name
- Acreage
- Municipality Index Beginning Atlas Page Number
- Deed Book & Page
- Subdivision Lot Number
- Plat Book & Page
- Tract Number
- Atlas Page Boundary
- Subdivision Name
- Street Name
- Denotes Continuous Ownership
- Municipality Index Atlas Page Boundary
- Tract Lot Number
- Atlas Page Number

USE OF THE MAP VOLUME

1. LOCATE THE GENERAL AREA OF INTEREST ON THE COUNTY INDEX MAP, ATLAS PAGE 'B'.
2. A. IF PROPERTY IS IN A TOWNSHIP, NOTE THE ATLAS PAGE NUMBER. TURN TO THE PAGE INDICATED AND LOCATE SPECIFIC PARCEL OF INTEREST.
NOTE: ON SOME MAPS YOU MAY BE REFERRED TO A DETAIL SHEET SHOWING AN ENLARGEMENT OF THE AREA. THESE MAPS ARE FOUND AT THE END OF THE REGULAR MAP PAGES IN EACH TOWNSHIP EITHER IN ALPHABETICAL OR NUMERICAL SEQUENCE.
- B. IF PROPERTY IS IN A MUNICIPALITY, REFER TO THE TABLE OF CONTENTS, ATLAS PAGE 'C', AND NOTE THE BEGINNING ATLAS PAGE NUMBER FOR THE MUNICIPALITY OF INTEREST.
 - (1) TURN TO THE PAGE INDICATED. ON THIS PAGE WILL APPEAR AN INDEX MAP FOR THAT MUNICIPALITY.
 - (2) LOCATE SPECIFIC AREA OF INTEREST AND NOTE THE MAP PAGE NUMBER.
NOTE: DO NOT CONFUSE THE MAP PAGE NUMBER WITH THE ATLAS PAGE NUMBER IN THESE MUNICIPALITIES.
 - (3) FOLLOW EITHER ALPHABETICAL OR NUMERICAL SEQUENCE TO THE MAP PAGE INDICATED AND LOCATE SPECIFIC PARCEL OF INTEREST.